



# ROWLAND HALL • ST. MARK'S SCHOOL

## 2007 • 2008 PROFILE FOR COLLEGES

843 Lincoln Street Salt Lake City, Utah 84102

phone 801.355.7494 fax 801.355.0474 www.rhsm.org

Alan Sparrow, Head of School  
Lee Thomsen, Upper School Principal

Bruce Hunter, Director of College Counseling  
Lee Nuckolls, Associate Director of College Counseling

ACT/CEEB Code: 450385

### MISSION

The mission of Rowland Hall-St. Mark's School (RHSM) is to develop students who will lead productive and ethical lives. The school offers a college preparatory program that combines the pursuit of academic excellence with the development of moral character.

### PHILOSOPHY

Since 1880, RHSM has sought to provide an environment in which academic excellence and ethical development are equally important in a community that values and appreciates each individual. From preschool through grade twelve, the school offers a program of active, independent learning which challenges our students' intellectual curiosity and creativity, helps them develop character, builds on strengths, and prepares them for a technologically complex world. We encourage our students to develop a commitment to learning as a lifelong goal and to remain, as alumni, a valued part of the school community.

While stressing cooperation and respect for others, RHSM challenges students to excel academically by offering a rigorous college preparatory curriculum. Dedicated teachers devote personal attention in small classes, providing students with the opportunity to succeed and become responsible, decision-making citizens. RHSM is committed to the importance of a broad liberal arts education with English, social studies, mathematics, science, and foreign languages at the core of its academic program. Equally important are the arts, technology, and athletics. We want our students to love learning, appreciate the arts, be technologically proficient, and strive for healthy lifestyles.

RHSM values integrity and responsibility. Students should gain a commitment toward bettering our world. We encourage students to learn tolerance and understanding through their education, role models, and community service programs.

RHSM actively pursues an ethnically, racially, religiously, and socio-economically diverse student body. This growing diversity enhances RHSM's greatest strength — its community — a caring place where students, faculty, parents, and alumni work together to create an ethical and supportive learning environment.

### HISTORY

Rowland Hall was founded in 1880 by the Episcopal Church to provide education to daughters of miners and ranchers in the Intermountain West. St. Mark's School was established in 1867, but closed just before Utah achieved statehood in support of the new public school system. It reopened sixty years later as a boys' day school. In 1964, Rowland Hall and St. Mark's merged to become a co-educational, college preparatory school that is today independent of the Episcopal Church while continuing to honor strong historic ties to its founder.

In 1986, RHSM was recognized by the United States Department of Education with its National Exemplary School Award for exhibiting strong leadership and steadfast dedication to achieving excellence.

Rowmark Ski Academy was founded in 1982, and has become one of a handful of elite ski academies for secondary school students in the United States. Rowmark skier/scholars and alumni have participated and medaled in the Olympic Winter Games and World Cup competition, and have been recruited by the U.S. Ski Team.

RHSM offers an enriched academic curriculum in small classes of 20 or fewer students, providing teachers with the opportunity to give individual attention to each student. It serves 980 students from preschool through twelfth grade. Current upper school enrollment is 287 with 79 students in the senior class and a student:faculty ratio of 7:1. The last four senior classes have graduated an average of 7 National Merit semifinalists (per average graduating class size of 70).

### RECENT DEVELOPMENTS

Upper School students inaugurated RHSM's Laptop Program. Faculty trained in Apple project-based learning have adapted their educational approach to better prepare students for learning and working in the 21st century.

### HIGHLIGHTS

- 2007 First Place in Utah State Math Contest
- 2007 Debate Tournament of Champions overall 5th place
- 2007 Second place in UHSSA 2A All-Sports Competition
- 2007 Tour de France 3rd place finish by '94 alum Levi Leipheimer
- 2007 Martin Luther King, Jr. Community Service Award

## CALENDAR, COURSE LOAD, GRADE POINT AVERAGE

RHSM is on a **trimester** system. Grades are issued at the conclusion of each trimester in late November, late March, and early June. All grades and credits are recorded on the student's transcript. Teacher comments are also submitted at the end of each trimester. First trimester grades are considered "midyear" grades for college admission purposes.

Most students take five academic courses per trimester. Rowmark students carry four academic courses per trimester to allow for a full afternoon of training. Classes for periods 1 through 6 meet each day for 45 minutes. Classes for periods 7A and 7B meet on alternate days for one hour and ten minutes. Athletic team practices and fine arts rehearsals take place after school.

GPA's are calculated according to the following scale:

A+ =4.00	B+ =3.33	C+ =2.33	D+ =1.33
A =4.00	B =3.00	C =2.00	D =1.00
A- =3.67	B- =2.67	C- =1.67	D- =0.67

Grades for AP classes are **weighted**. An additional grade point is assigned to each AP class grade for purposes of GPA calculation only. Grades are not weighted for any other courses. GPA's include both academic and fine arts classes and are computed only for courses taken at RHSM. Physical education credits and activity credits are not calculated into GPA.

## CLASS RANK

Because of the highly academic nature of the school and in the interest of reducing feelings of competition among students, **RHSM does not rank**, but a cumulative grade distribution chart for the last two graduating classes is presented on the next page.

## ADVANCED PLACEMENT

RHSM offers a full range of AP courses, and the majority of students graduate having taken at least one AP course. Juniors may take no more than two AP courses, and seniors may take no more than three AP courses, without making a written request to the Academic Department Chairs, and receiving that group's approval. Students enrolled in AP courses must take the corresponding AP exam(s) in May. The AP courses offered by the school are listed on the next page.

## HONOR ROLL AND HEADMASTER'S LIST

Both are determined three times a year, at the end of each trimester, using unweighted grades from academic and fine arts classes. To qualify for Honor Roll a student must earn grades of B+ or higher on the transcript with no more than one grade of B or B-. To be considered for the Headmaster's List or the Honor Roll, a student must be enrolled in at least four GPA-bearing courses.

## DIPLOMA WITH DISTINCTION

RHSM awards a Diploma with Distinction to students who complete year-long advanced projects on specific topics within a discipline. Faculty members serve on a Distinction committee that reviews and advises each student's project, and students present a Distinction concert, lecture, reading, performance, or recital to the RHSM community to conclude the Distinction project. Eighteen members of the class of 2007 graduated with Distinction, and 15 members of the class of 2008 are working to do so.

## ATHLETICS

RHSM athletic teams participate in Division 2A athletics in Region XIV of the Utah High School Activities Association in the sports listed under Athletic Programs on the next page. Twenty-five students train for competitive alpine skiing as part of Rowmark Ski Academy. Further information is available at [www.rowmark.org](http://www.rowmark.org) and a Rowmark-specific supplement is included with transcripts for Rowmark students. On six Friday afternoons during the winter months, the entire student body participates in a winter sports program.

## INTERIM

Interim is an experiential learning program designed by teachers for ninth through twelfth graders that occurs in late May and reflects the diverse interests and experiences of our faculty. In-town activities and out-of-town trips, typically lasting five to ten days, are offered. This hands-on learning experience is designed to enhance self-reliance, responsibility, leadership skills, and teamwork, as well as the opportunity to build relationships outside the traditional educational setting. Interim experiences in May 2007 included trips to Italy and Alaska, as well as local Habitat for Humanity projects and a community service Interim in New Orleans.

## SERVICE LEARNING

RHSM has a strong tradition of volunteerism and service in our community. In keeping with the school's mission to "develop students who will lead productive and ethical lives," RHSM promotes community service throughout the school. Our students do not have a community service graduation requirement. Instead, students participate in service that is integrated into their coursework across the curriculum (service learning), have opportunities to be active in extracurricular service clubs, are involved in all-school service efforts, and are encouraged to volunteer in our greater community throughout the year. Our community service program's goals are for students to gain a life-long commitment toward bettering our world, to develop an awareness and appreciation of the differences among us, to appreciate the power of teamwork, and to understand that privileges do not come without responsibilities.

## SUSTAINABILITY

The E. E. Ford Foundation grant that supported the development of a new academic course continues in its second year, and the school has renewed its recycling efforts, drafted a sustainability charter, and begun "no idling" and commuter challenge programs.

# CURRICULUM

**RHSM's college preparatory curriculum emphasizes the basic disciplines and provides opportunity for advanced work in areas of students' interests and strengths. A list of courses offered in each department follows. Graduation requirements are noted in parentheses.**

## ACTIVITY (1/3 year)

Debate  
Literary Magazine  
Newspaper  
Student Council  
Yearbook

## ARTS (1-1/3 years)

Chorus  
Band  
AP Music Theory  
Movement Experience (Dance)  
Dance Company (audition only)  
Musical Theatre  
Studio Art  
AP Studio Art  
Ceramics  
Advanced Ceramics  
Photography

## ATHLETIC PROGRAMS (2-2/3 years)

Basketball - girls and boys  
Baseball - boys  
Cross Country - coed  
Golf - girls and boys  
Soccer - girls and boys  
Softball - girls  
Swimming - coed  
Tennis - girls and boys  
Volleyball - girls  
Rowmark Ski Academy - girls and boys

## ENGLISH (4 years)

English 9  
Honors English 9  
English 10  
Honors English 10  
English 11  
AP Language & Composition  
English 12  
AP Literature & Composition  
Creative Writing

## ETHICS (1/3 year)

## WORLD RELIGIONS (1/3 year)

## FOREIGN LANGUAGE (2 years)

French I, II, III, IV, French Literature  
AP French Language  
Spanish I, II, III, IV, Spanish Literature  
AP Spanish Language  
Latin I, II, III, IV  
AP Latin

## HEALTH (2/3 year)

Health I – Skills for Transition  
Health II – Healthy Lifestyles  
Health III – Adolescent Issues

## HISTORY (3 years)

Eastern Civilization  
Western Civilization  
Honors Western Civilization  
Political Science  
The Science and Economics of Sustainability  
US History  
AP US History  
AP Art History  
AP Psychology  
AP European History

## MATHEMATICS (3 years)

Algebra  
Geometry  
Honors Geometry  
Algebra II  
Honors Algebra II  
Pre-Calculus  
Honors Pre-Calculus  
Mathematics Applications  
AP Statistics  
AP Calculus AB  
AP Calculus BC

## PHYSICAL EDUCATION

Conditioning  
Lifetime Activities  
Physical Education

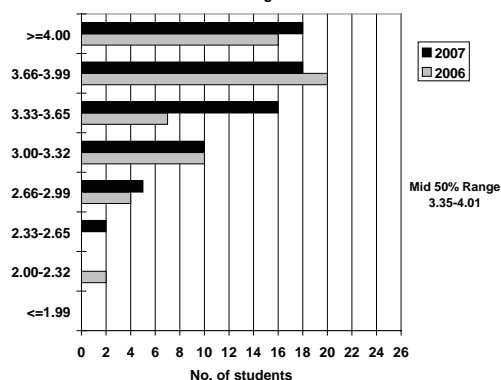
## SCIENCE (2 years)

Biology  
Honors Biology  
Chemistry  
Honors Chemistry  
Physics  
Honors Physics  
Environmental Science  
AP Biology  
AP Chemistry  
AP Physics  
Geology-Avalanche Study

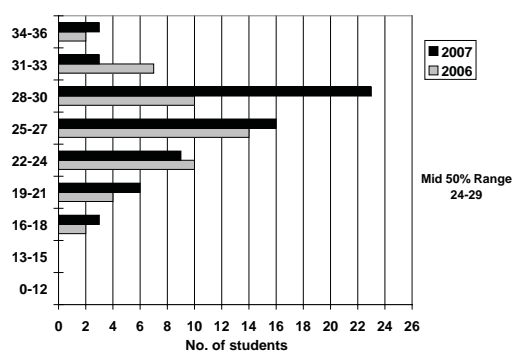
## TECHNOLOGY & MEDIA (1/3 year)

Introduction to Computers  
Advanced Introduction to Computers  
Introduction to Digital Media  
Advanced Digital Media  
Web Design  
Videography

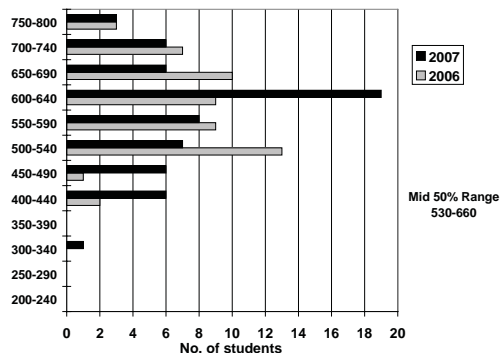
Final Cumulative GPA--Graduating Classes of 2006 and 2007



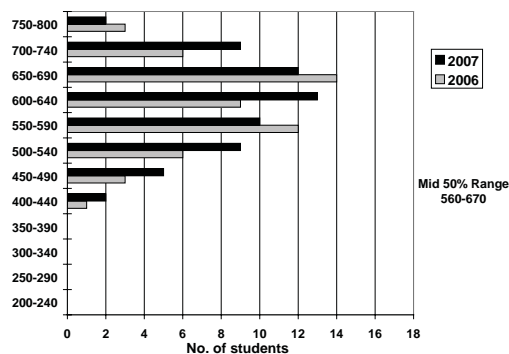
ACT Composite--Classes of 2006 and 2007



SAT Math Results--Classes of 2006 and 2007



SAT Critical Reading Results--Classes of 2006 and 2007



## COLLEGE MATRICULATION

**NINETY-EIGHT PERCENT** of all Rowland Hall-St. Mark's School graduates begin college or university study upon graduation; virtually all enroll in four-year institutions. Graduates of the classes of 2003-2007 *matriculated* to the following institutions:

Acadia University, Canada	Hampshire College	Santa Barbara City College
Agnes Scott College	Harvard University	Santa Clara University
American University	Harvey Mudd College	College of Santa Fe
University of Arizona	University of Hawai'i, Manoa	Sarah Lawrence College
Arizona State University	Hawai'i Pacific University	Savannah College of Art and Design
Babson College	Idaho State University	Scripps College
Bard College	Illinois Institute of Technology	Seattle University
Barnard College	Kenyon College	Skidmore College
Bates College	Knox College	Smith College
Berklee College of Music	Lake Forest College	University of South Carolina
Boise State University	Lewis & Clark College	University of Southern California
Boston College	Linfield College	Southern Methodist University
Boston University	Loyola University, New Orleans	Southern Utah University
Bowdoin College	Macalester College	Stanford University
Brandeis University	Maine College of Art	University of Texas, Austin
University of British Columbia	University of Maryland, Baltimore County	Tisch School of the Arts, New York University, NY
Brooks Institute of Photography	Michigan State University	Trinity University, TX
Brown University	Middlebury College	Tufts University
Bryn Mawr College	Montana State University, Bozeman	United States Air Force Academy
University of California, Berkeley	New York University	Uppsala University, Sweden
University of California, Los Angeles	Northern Arizona University	University of Utah
University of California, San Diego	Northwestern University	Vassar College
University of California, Santa Barbara	University of Notre Dame	University of Virginia
University of California, Santa Cruz	Occidental College	University of Washington
California College of the Arts	Ohio Wesleyan University	Washington & Lee University
California Polytechnic State University, San Luis Obispo	University of Oregon	Washington College, MD
Carleton College	Pacific University, OR	Washington University, MO
Carroll College, MT	University of Pennsylvania	University of Waterloo
Chapman University	Pepperdine University	Weber State University
University of Chicago	Pomona College	Western Washington University
Claremont McKenna College	University of Portland	Westminster College, UT
Clark University	University of Puget Sound	Wheaton College, IL
Clarkson University	Purdue University	Whitman College
Coe College	University of Redlands	Whitworth College
Colby College	Reed College	Willamette University
University of Colorado, Boulder	Regis University, CO	University of Wisconsin, Madison
Colorado College	University of Richmond	Yale University
Colorado State University	University of Rochester	
Connecticut College	Saint Mary's College of California	
Cornell University	University of San Diego	
Dartmouth College	University of San Francisco	
University of Delaware		
University of Denver		
Dickinson College		
Embry-Riddle Aeronautical University, AZ		
Emory University		
Fordham University		
Fort Lewis College		
French Culinary Institute, NY		
George Washington University		
Georgetown University		
Gettysburg College		
Gonzaga University		
Grinnell College		
Guilford College		
Gustavus Adolphus College		

## ACCREDITATION

Rowland Hall-St. Mark's School is accredited by the National Association for the Education of Young Children, the Northwest Association of Schools and Universities, the Utah Department of Education, the Pacific Northwest Association of Independent Schools (PNAIS) and maintains membership in the National Association of Independent Schools (NAIS), the National Association of Episcopal Schools (NAES), the Utah High School Activities Association (UHSAA), the National Association for College Admission Counseling (NACAC), the Rocky Mountain Association for College Admission Counseling (RMACAC), The College Board, and the Utah Society of Environmental Education.